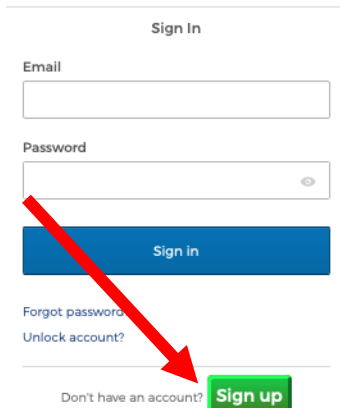


How to Register for a MyDelaware Account

Use a web browser (Chrome, Edge, Safari, Firefox) to open <https://my.delaware.gov>
Follow the directions below or watch the [registration demonstration video](#) if you prefer.

1 - Click on the green **Sign Up** button to create your account.



Sign In

Email

Password

Sign in

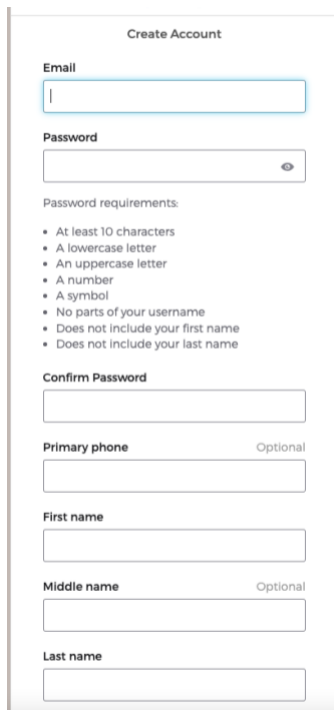
Forgot password?

Unlock account?

Don't have an account? **Sign up**

Figure 1 - Sign in Window

2 - Fill out the registration form Use ONLY an email account belonging to you, that you can access.



Create Account

Email

Password

Password requirements:

- At least 10 characters
- A lowercase letter
- An uppercase letter
- A number
- A symbol
- No parts of your username
- Does not include your first name
- Does not include your last name

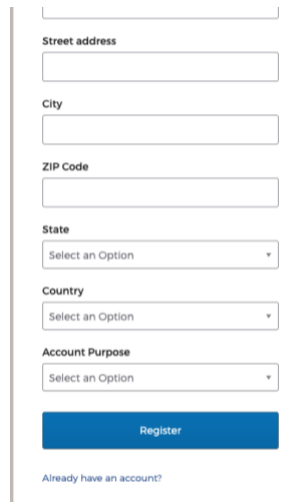
Confirm Password

Primary phone Optional

First name

Middle name Optional

Last name



Street address

City

ZIP Code

State

Select an Option

Country

Select an Option

Account Purpose

Select an Option

Register

[Already have an account?](#)

NOTE: If you don't have your own UNIQUE (not shared) email account, please create a free one online before you begin registration. **To be able to activate your account, you must verify you own this email** by opening the message from MyDelaware, then click on the Activation link in that email.

Figure 2 – Left- Top portion of Create Account Window Figure 3 – Right – Lower portion of Create Account Window

3 – Click the blue **Register** button.

4 –Secure your access and set multifactor authentication (MFA) methods.

IMPORTANT: The first factor, email, is REQUIRED to activate your account.

It also allows you to unlock your own account and/or reset your password by yourself. You must be able to access your personal email (on this computer or on a smartphone) to set this factor up because you must open an email and click on the button/link provided.

Beginning with **Email**, click the **Set Up** button.

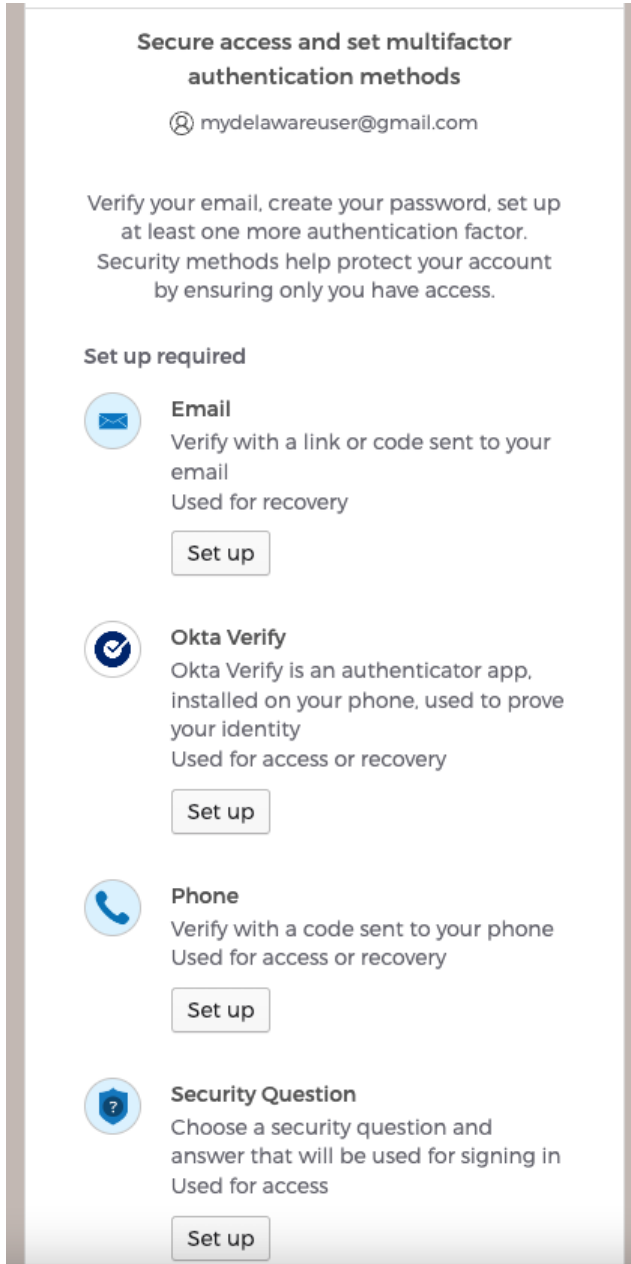


Figure 4 - Security and MFA Authentication Set Up Window

5 – The **Verify with your Email** window shows myDelaware sent you email. Open/go to your email account. You **MUST** open the email from MyDelaware and click the green **Activate Account** button to prove you own your email address, linking your account.

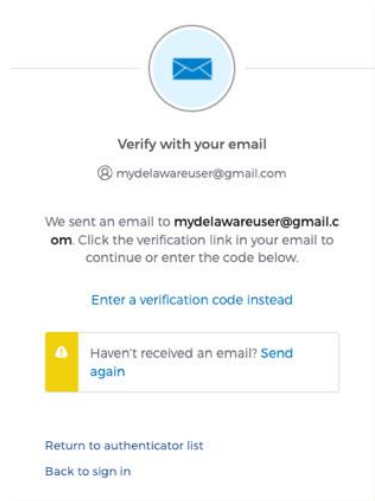


Figure 5 - Activate Account Email

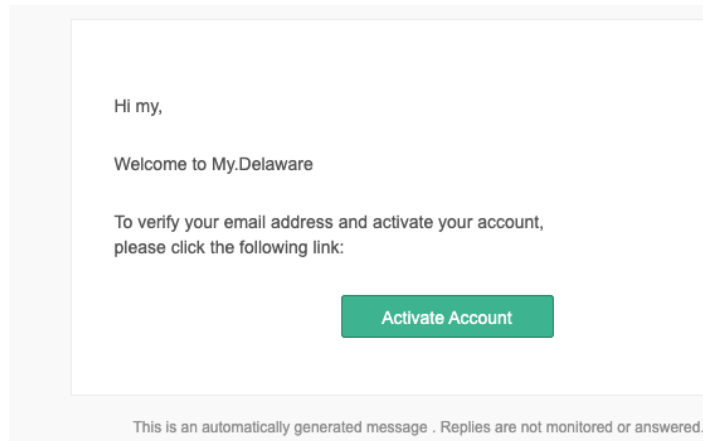


Figure 6 - Verify Email Window

6 – Next, **Set up phone authentication** (can choose SMS text message or a Voice Call);

NOTE: You must have access to respond by phone to set up this security method.

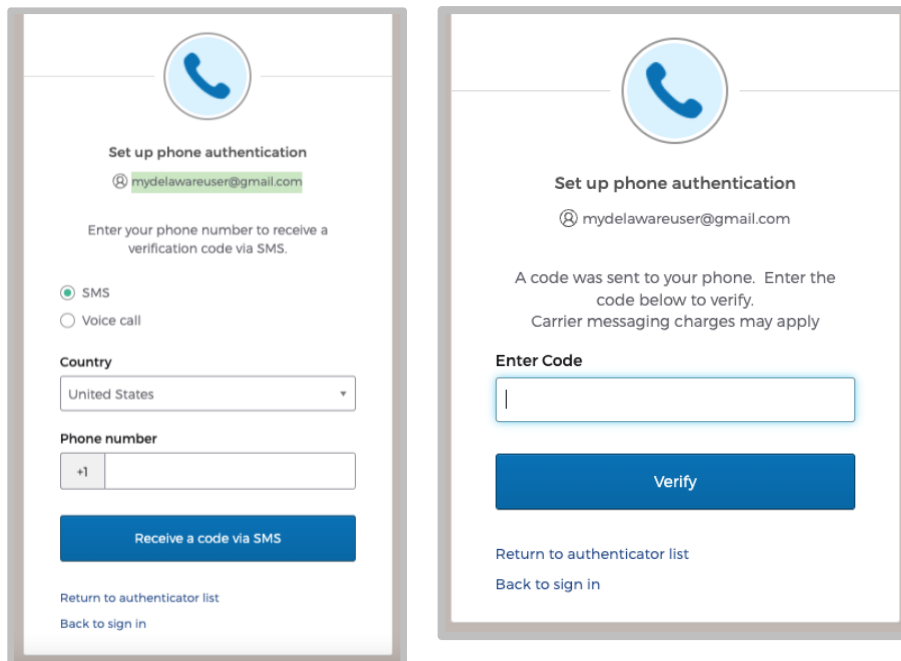


Figure 7 - Set up phone authentication window and window to verify the phone by entering the code received.

7 – Set up Okta Verify

NOTE: This method requires first installing the Okta Verify application on your smartphone. You must be on a computer/laptop/tablet AND scan the QR code displayed with your smartphone's Okta Verify app to set up this method. Also, if you lose access to your smartphone or change your mobile number, you will need to access your account using another factor and then remove this factor and set it up again with your new mobile device/number. Please assure you have several factors set up to access your account.

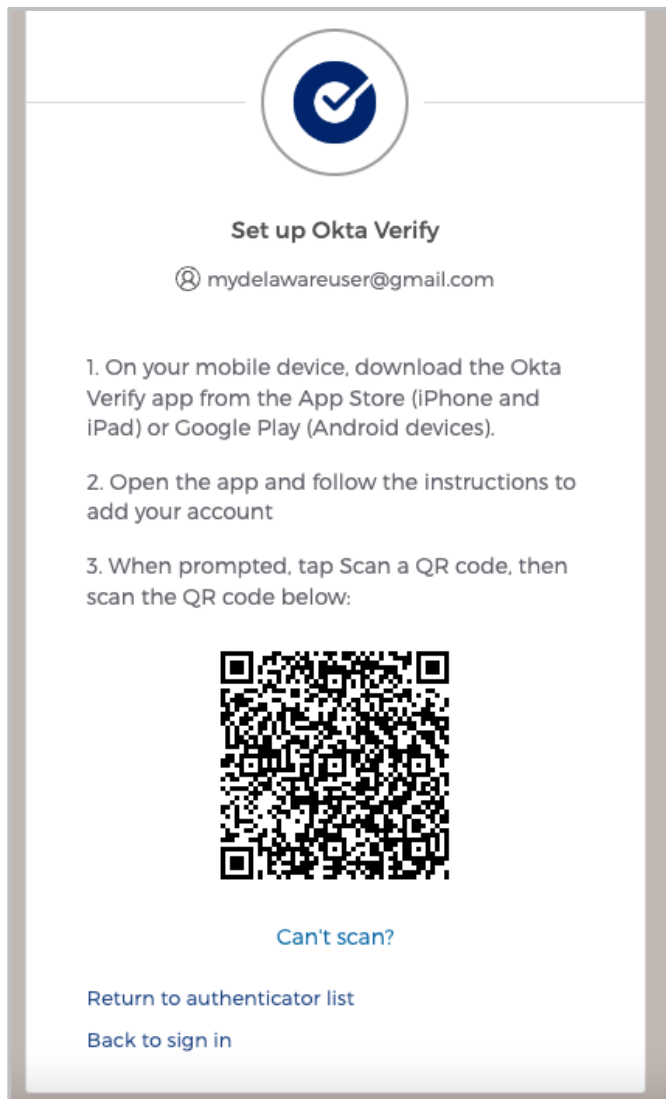


Figure 8 - Set up Okta Verify Window

8 – **Set up a Security Question** (NOTE: this method can ONLY be used for access. You cannot unlock your account or reset your password with this method, so please be sure to **set up phone authentication** and/or **Okta Verify**).

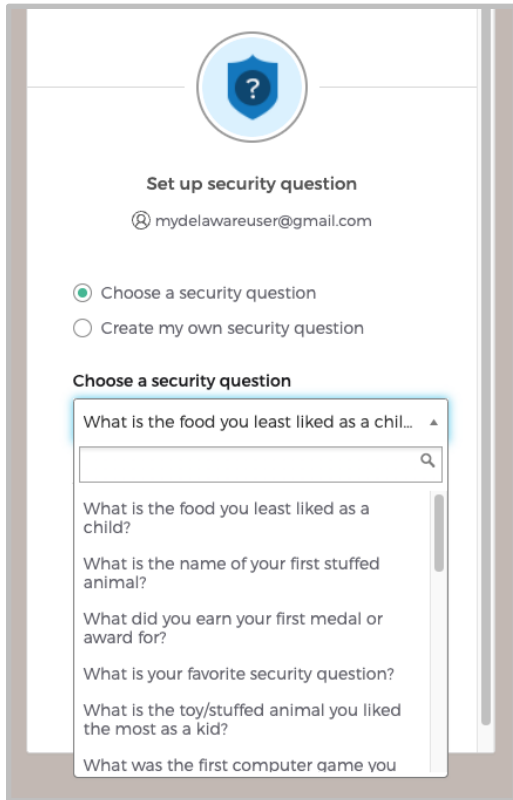


Figure 9 - Set up Security Question

7 - After you complete sign-up, you will see the myDelaware dashboard whenever you log into your myDelaware account. Any applications you need to access via your myDelaware identity will appear on the dashboard after they are assigned to you.

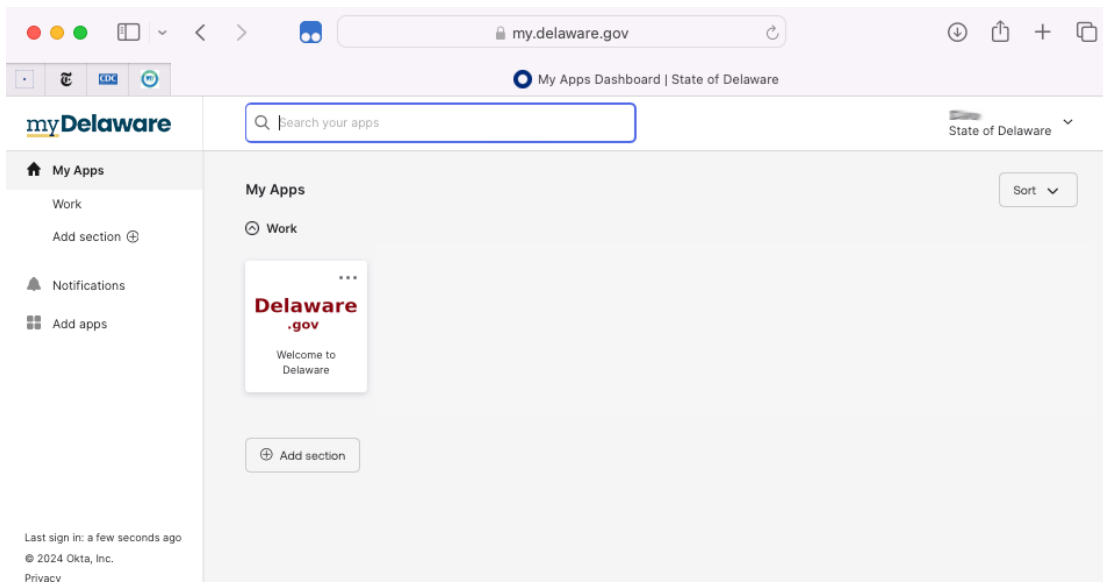


Figure 10 - Screenshot of new user's my.Delaware dashboard.